



TOTAL OF 349 TREES

*not including the additional 1550+ shrubs and 30,000 sqft groundcover + lawn

Courtyard Trees

TREE PLANTING SCHEDULE						
SCIENTIFIC NAME	COMMON NAME	KEY	QUANTITY	SIZE	SPACING	NOTES
LARGE TREES						
Acer rubrum 'Franksred'	Red Sunset Maple	ARRM	5	5" CAL.	As Shown	
Gleditsia triacanthos 'Skyline'	Skyline Honeylocust	GTHL	9	4" CAL.	As Shown	
Gymnocladus dioica 'Espresso'	Espresso Kentucky Coffeetree	GDKC	15	4" CAL.	As Shown	Multi-Stem
Betula populifolia 'Whitespire'	Whitespire Birch	BPCB	10	3" CAL.	As Shown	Multi-Stem
Cladrastis kentuckea	American Yellowwood	CKAY	5	3" CAL.	As Shown	Single-Stem
Stewartia pseudocamellia	Japanese Stewartia	SPST	9	3" CAL.	As Shown	Multi-Stem

North River Park



Heritage Birch
(21 trees)



Black Gum
(20 trees)



Pin Oak
(16 trees)



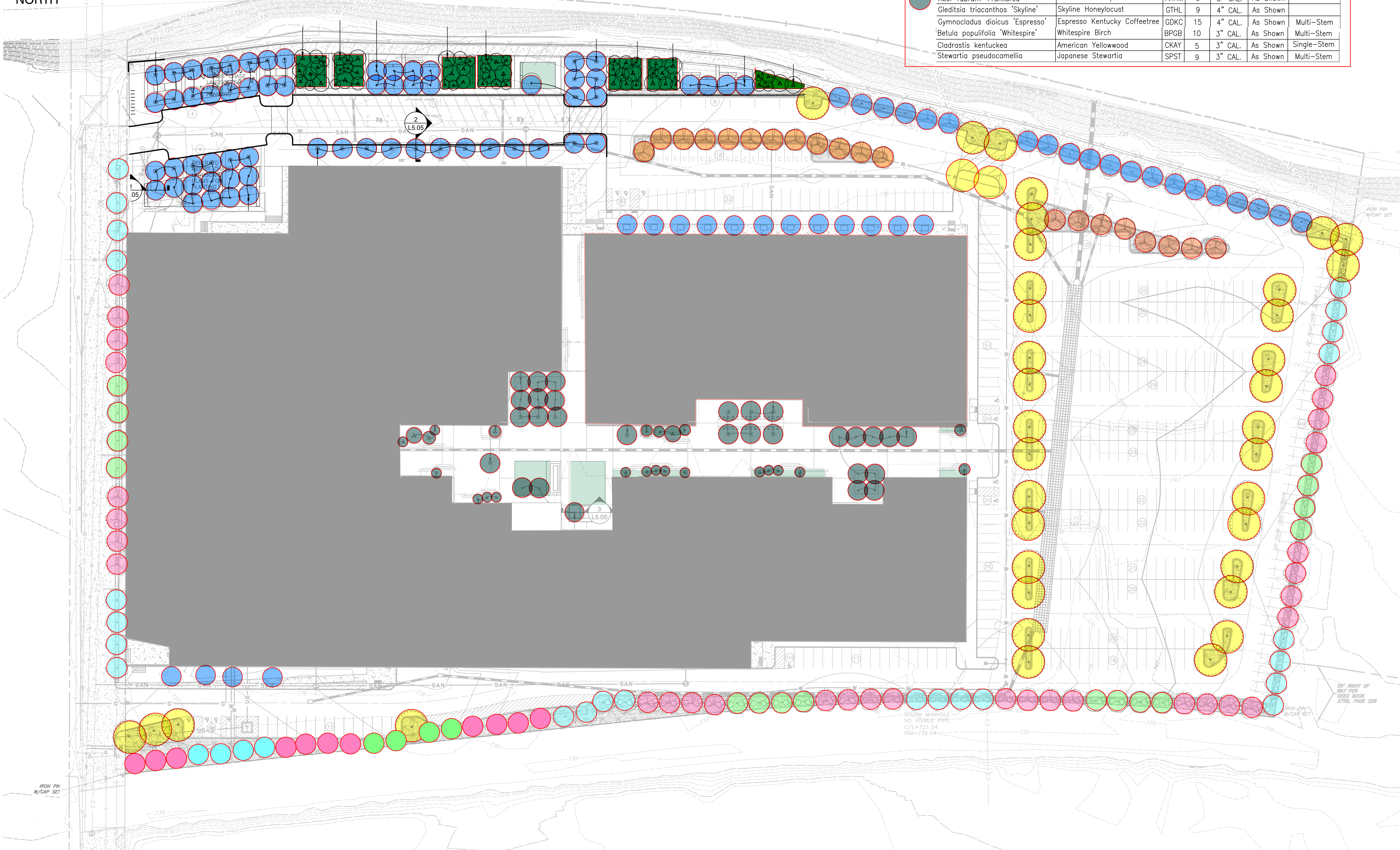
Bloodgood planetree
(87 trees)



Platanus x acerifolia 'Bloodgood' / London Plane Tree



Quercus bicolor / Swamp White Oak



PLANT SCHEDULE

TREES	CODE	QTY	BOTANICAL / COMMON NAME	CONT	CAL	REMARKS
	CC	40	Carpinus caroliniana / American Hornbeam	B&B	2" Cal.	
	KP	32	Koeleruteria paniculata / Golden Rain Tree	B&B	2" Cal.	
	PA	20	Phellodendron amurense / Amur Corktree	B&B	2" Cal.	
	PC	20	Platanus x acerifolia 'Bloodgood' / London Plane Tree	B&B	2.5" cal.	
	QB	40	Quercus bicolor / Swamp White Oak	B&B	2.5" cal.	
SHRUBS	CODE	QTY	BOTANICAL / COMMON NAME	CONT	HT.	REMARKS
	IG	102	Ilex glabra / Inkberry Holly	No. 5 Cont.	42" Min.	
	JF	153	Juniperus chinensis 'Sea Green' / Sea Green Juniper	No. 5 Cont.	42" Min.	
GROUND COVERS	CODE	QTY	BOTANICAL / COMMON NAME	CONT	SPACING	REMARKS
	GCM	26,793 sf	Groundcover Mix	1 gal.		SEE NOTES FOR PLANT MIX

NOTE
1. FOR ADDITIONAL PLANTINGS SEE 'L' SERIES DRAWINGS PREPARED BY MERRITT CHASE.

GROUND COVER MIX					
TOTAL PERCENTAGE	SCIENTIFIC NAME	COMMON NAME	SIZE	SPACING	NOTES
18.00%	ASTER NOVAE-ANGLIAE	NEW ENGLAND ASTER	1 GALLON	18" O.C.	RANDOM DISTRIBUTION
12.00%	RUDBECKIA MAXIMA	GREAT CONEFLOWER	1 GALLON	18" O.C.	RANDOM DISTRIBUTION
35.00%	PANICUM VIRGATUM 'SHENANDOAH'	SHENANDOAH SWITCHGRASS	1 GALLON	24" O.C.	GROUPINGS OF 9 MI
35.00%	SCHIZACHYRIUM SCOPARIUM	LITTLE BLUESTEM	1 GALLON	24" O.C.	GROUPINGS OF 9 MI



Carpinus caroliniana / American Hornbeam
*deciduous



Koeleruteria paniculata / Golden Rain Tree
*deciduous



Phellodendron amurense / Amur Corktree
*deciduous



Ilex glabra / Inkberry Holly



Juniperus chinensis 'Sea Green' / Sea Green Juniper

REFERENCE
1. SURVEY PERFORMED BY MDM, LLC. ON 7/17/19
2. ELEVATIONS SHOWN HEREON ARE BASED UPON GPS OBSERVATIONS TAKEN ON JULY 2, 2019 AND ARE TO THE NORTH AMERICAN VERTICAL DATUM OF 1988 (AVD 88) GEOID12A