

27 51ST STREET RENOVATIONS

ZONING DEVELOPMENT REVIEW APPLICATION DOCUMENTS

December 06, 2019

PERKINS —
EASTMAN



LOCATION MAP



EXISTING CONDITIONS

AERIAL VIEW FROM LAWRENCEVILLE



EXISTING CONDITIONS

AERIAL VIEW FROM ROUTE 28



EXISTING CONDITIONS

SITE PHOTOS



SOUTHEAST CORNER – ALONG RAILROAD TRACKS



SOUTHWEST CORNER – ALONG 51ST STREET



NORTHWEST CORNER – ALONG 51ST STREET

27 51ST STREET – PERKINS EASTMAN



NORTHEAST CORNER

EXISTING CONDITIONS

SITE PHOTOS



SOUTH FAÇADE



WEST HALF OF NORTH FAÇADE

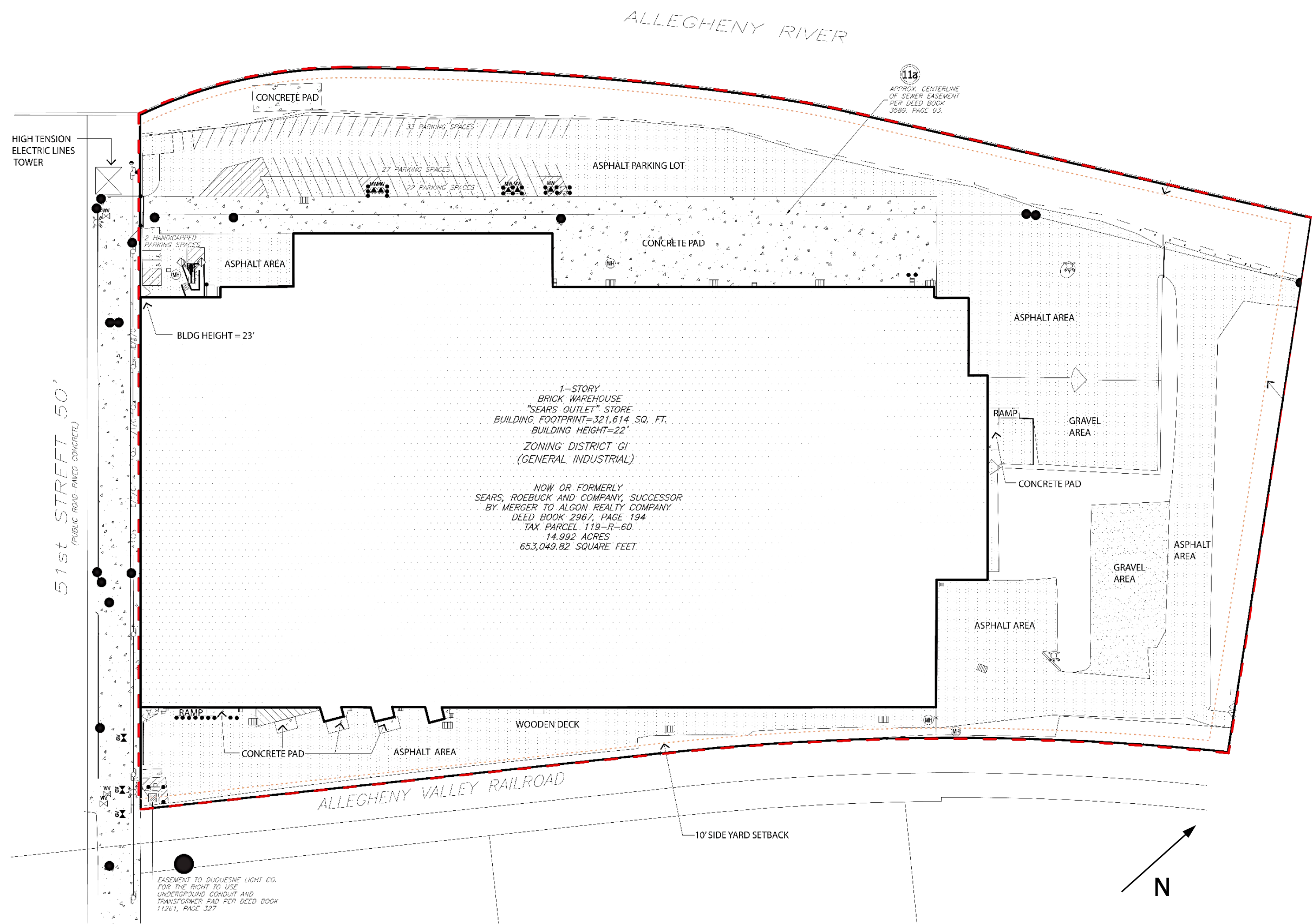


EAST FAÇADE



WEST FAÇADE

SITE SURVEY



FEMA FLOOD PLAIN



AERIAL VIEW

LOOKING NORTHEAST



AERIAL VIEW

LOOKING SOUTHEAST



SITE ARRIVAL

LOOKING NORTH



SOUTH GROVE



SOUTH ENTRY

SOUTH ELEVATION



51ST STREET

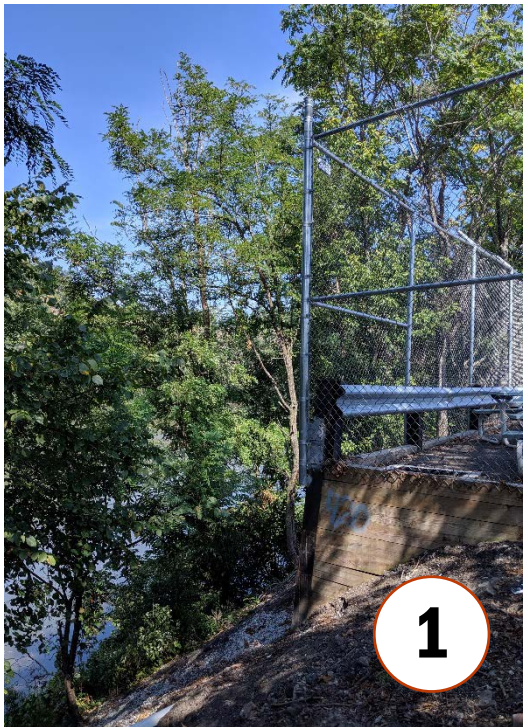
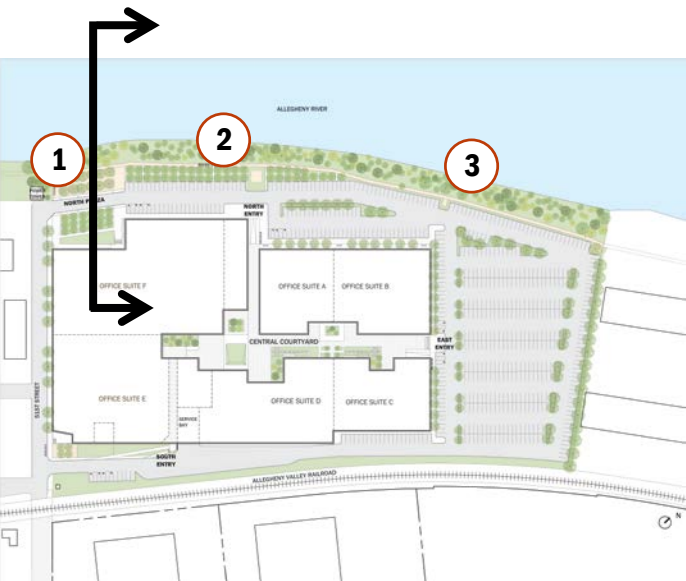
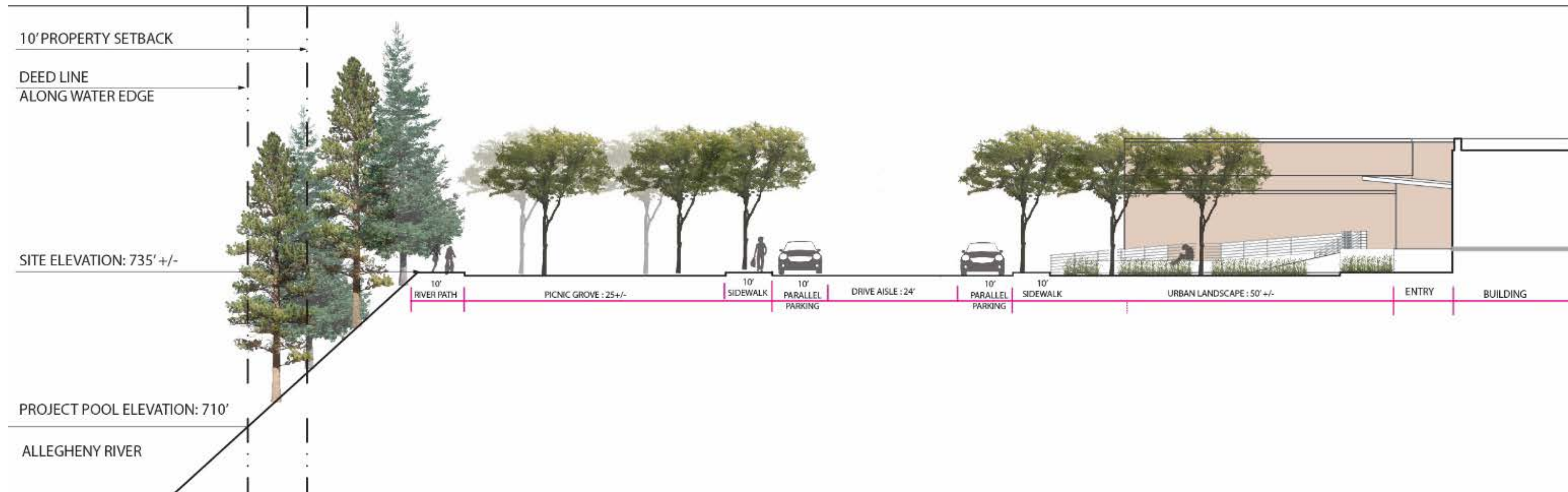


NORTH PLAZA

NORTHWEST ENTRY OF SITE



SECTION AT RIVER



RIVER PATH

LOOKING EAST



RIVER TRAIL



NORTH MAIN ENTRANCE



PERKINS —
EASTMAN