

Butler Street Design Guidelines

Lawrenceville Corporation
Community Meeting- April 2019
Studio for Spatial Practice



Butler Street Design Guidelines

Goals:

1. Create **Standards for future streetscape improvements** to be implemented as part of development projects.
2. Identify **traffic calming and place-making opportunities** along the corridor for which future funding could be pursued.

Butler Street Design Guidelines

Outcomes:

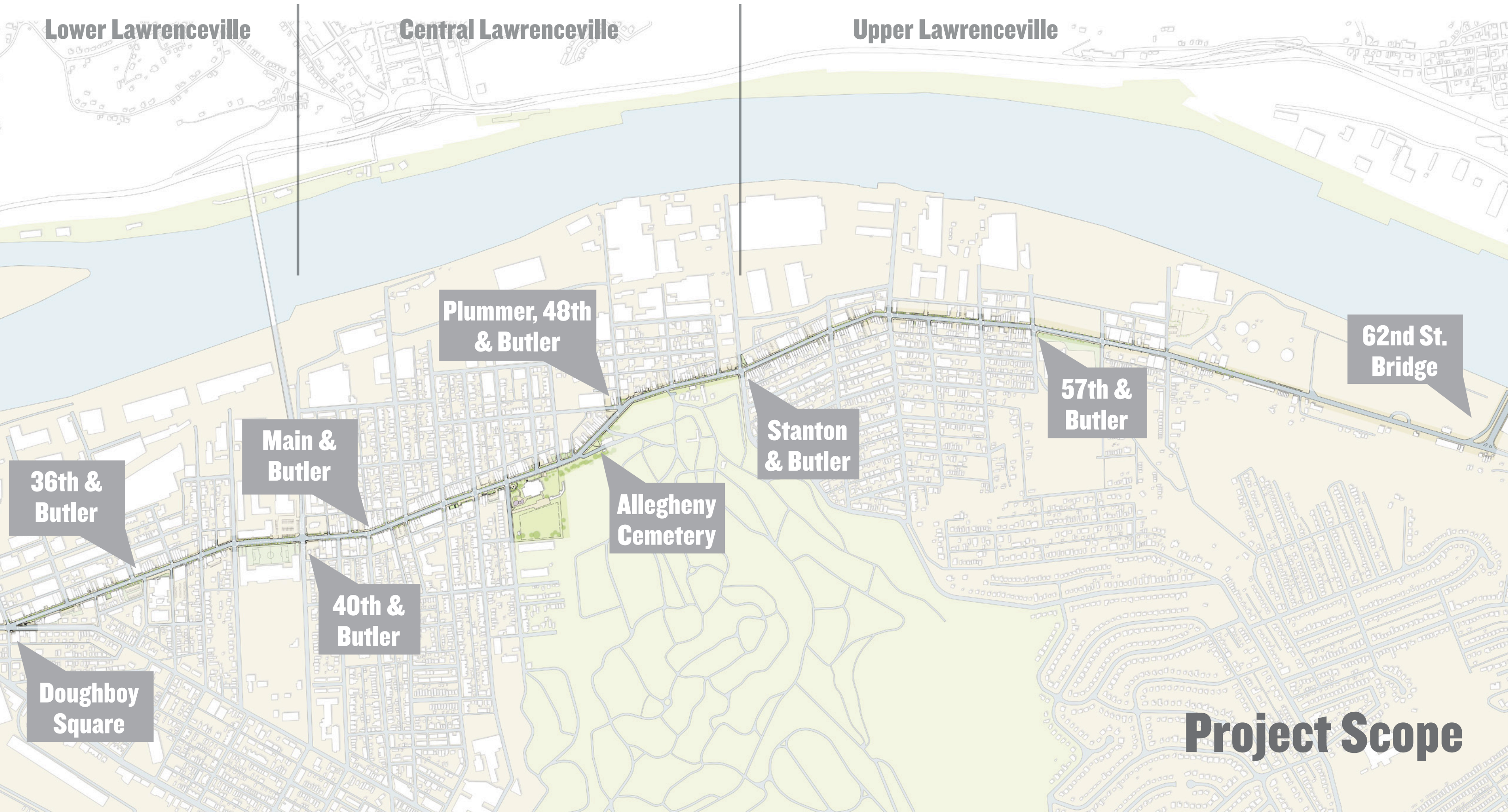
1. Create **Design Strategies and Standards** for Landscape & Green Infrastructure, Street Furniture, Lighting, Traffic Calming Measures, and Public Art for future development along Butler Street.
2. Designate specific **place-making opportunities** along the corridor providing detailed illustrations of opportunities for improving the public realm.

Butler Street Design Guidelines

How does this project build on other City of Pittsburgh efforts?

- **Recommendations will apply the city's Complete Streets Policy and Design Guidelines to Butler**
- **Will integrate Strip District Network and Parking Management Study recommendations**
- **Will integrate Pittsburgh Bike Plan recommendations**

Butler Street Design Guidelines



Lower Lawrenceville

Central Lawrenceville

Upper Lawrenceville

Plummer, 48th
& Butler

Main &
Butler

40th &
Butler

36th &
Butler

Doughboy
Square

Allegheny
Cemetery

Stanton
& Butler

57th &
Butler

62nd St.
Bridge

Project Scope

Process | Timeline

February 2019

Task 1 - Needs & Opportunities

- Existing conditions survey & mapping
- Walkshop
- Resident and business owner surveys

April-May 2019

Task 2 - Conceptual Design Scenarios and Strategies

- Design strategy concepts
- **Community Meeting (tonight)**
- Complete corridor design recommendations
- Draft report issued for review

June 2019

Task 3 - Design Guidelines

- Schematic design plan
- Final meetings

Process | Public Input

How has the community's input been collected?

- Better Streets Lawrenceville survey: 169 responses
- Business Owners survey: 51 responses
- Resident survey: 85 responses
- Walkshop
- There is still time for input + comments!

Findings | Surveys

Survey Questions for Business Owners:

- What are the current issues with your district and more specifically your block?
- In an ideal world, how would Butler Street (in your area) function?
- In an ideal world, what would Butler Street (in your area) look like? What is the future character you envision?

Findings | Surveys

Survey Questions for Residents:

- According to a survey conducted in 2016 by Better Streets Lawrenceville, 40th and Butler Street was listed as the most problematic intersection on Butler St. What are other places along Butler Street that you feel unsafe?
- In an ideal world, what would Butler Street (in your area) look like? What is the future character you envision? (We are looking for your suggestions regarding landscape and stormwater planters, lighting, street furniture, public art, and anything else that builds upon the existing character...)
- When you visit a Butler Street business, how do you get there (walk, drive, bike?) and how can that experience be improved?

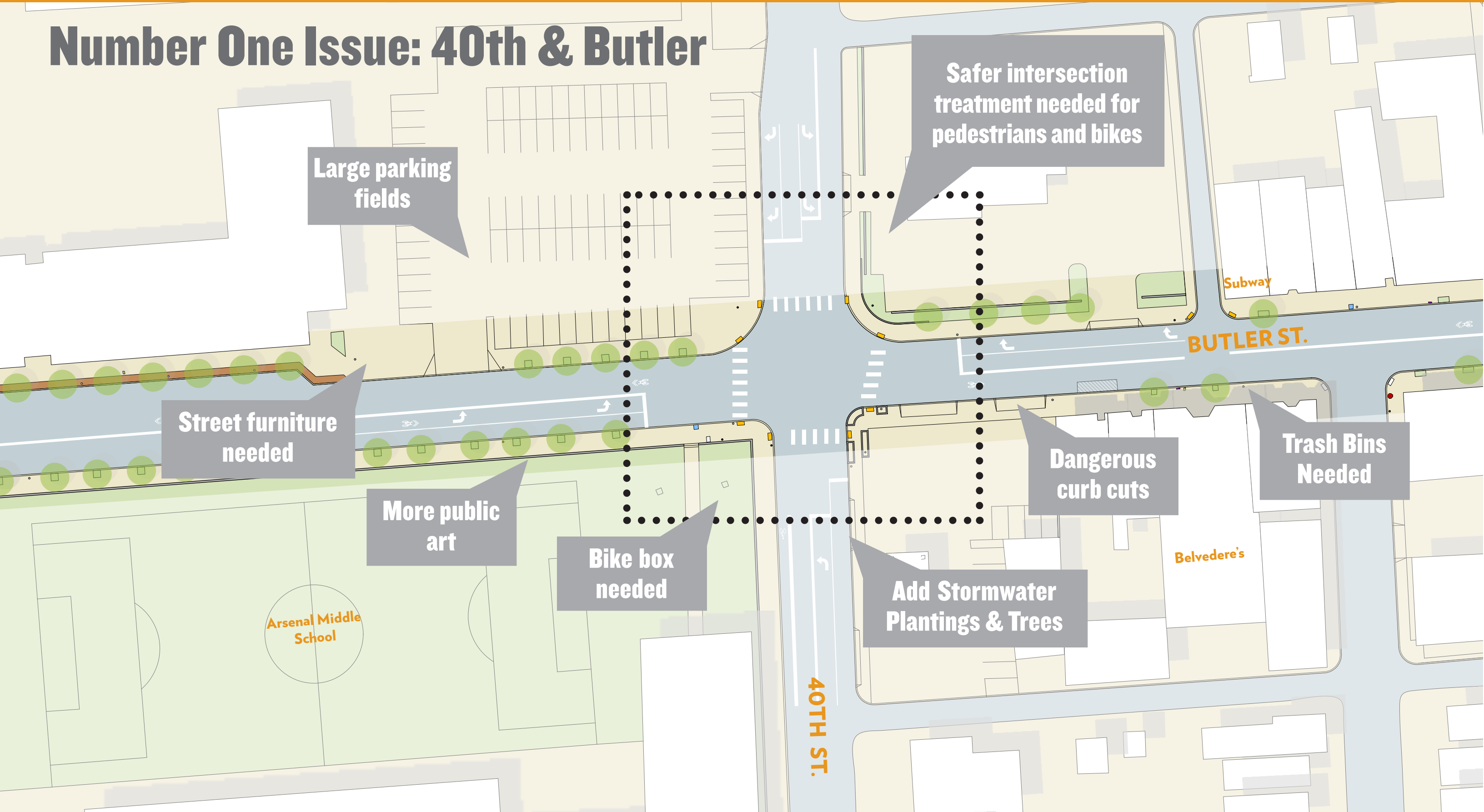
Findings | Survey Responses

Emerging Strategies from Survey Responses:

- Improve pedestrian and bike safety: apply traffic calming techniques at key intersections & curb cuts
- Organize the existing sidewalk elements to reduce clutter & ensure accessibility
- Add more street trees & stormwater plantings
- Add more street furniture & bus shelters
- Add more public art
- Improve parking & loading management

Findings | Survey Responses

Number One Issue: 40th & Butler



Large parking fields

Street furniture needed

More public art

Bike box needed

Safer intersection treatment needed for pedestrians and bikes

Dangerous curb cuts

Trash Bins Needed

Add Stormwater Plantings & Trees

Subway

BUTLER ST.

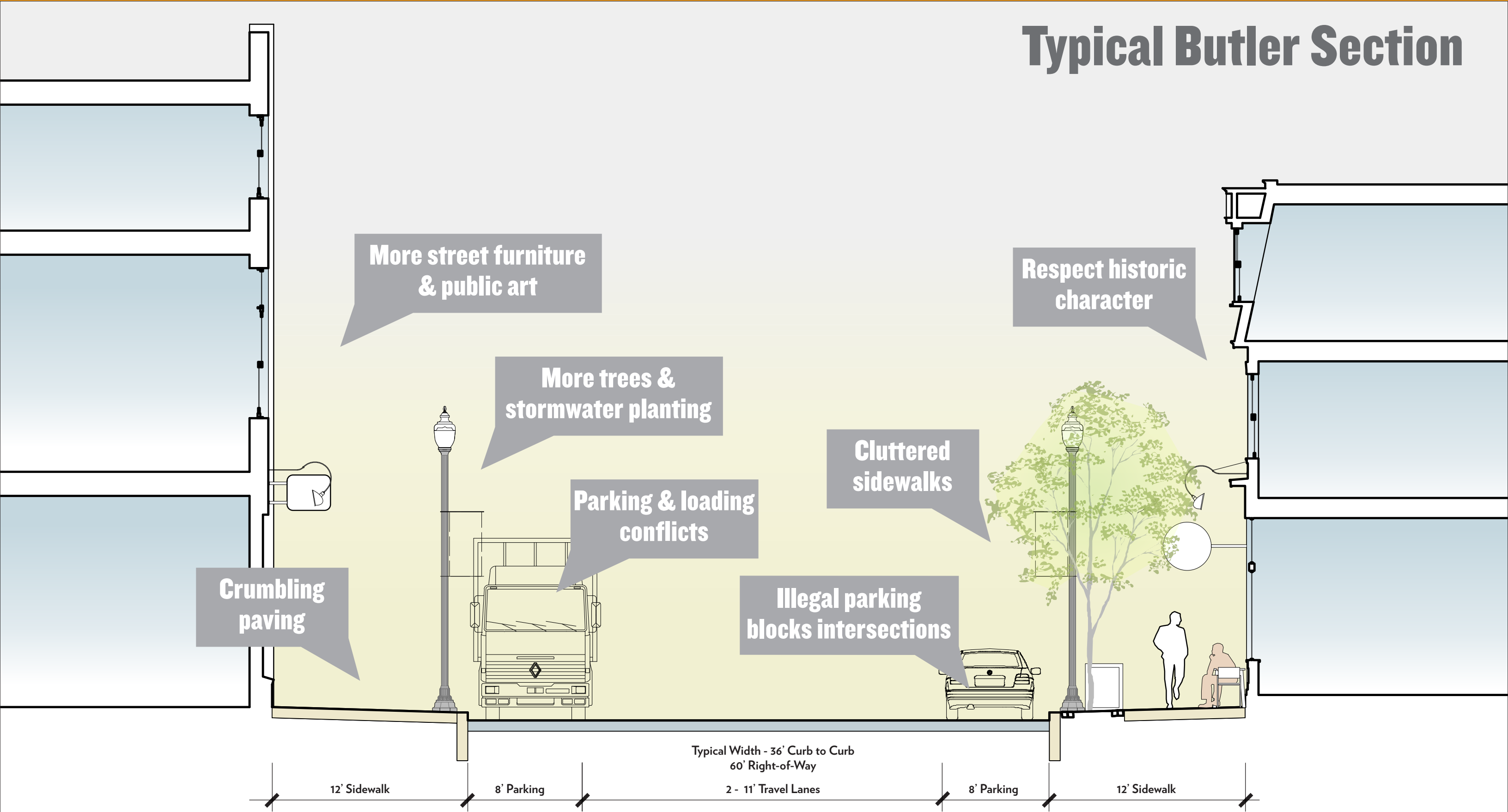
Belvedere's

Arsenal Middle School

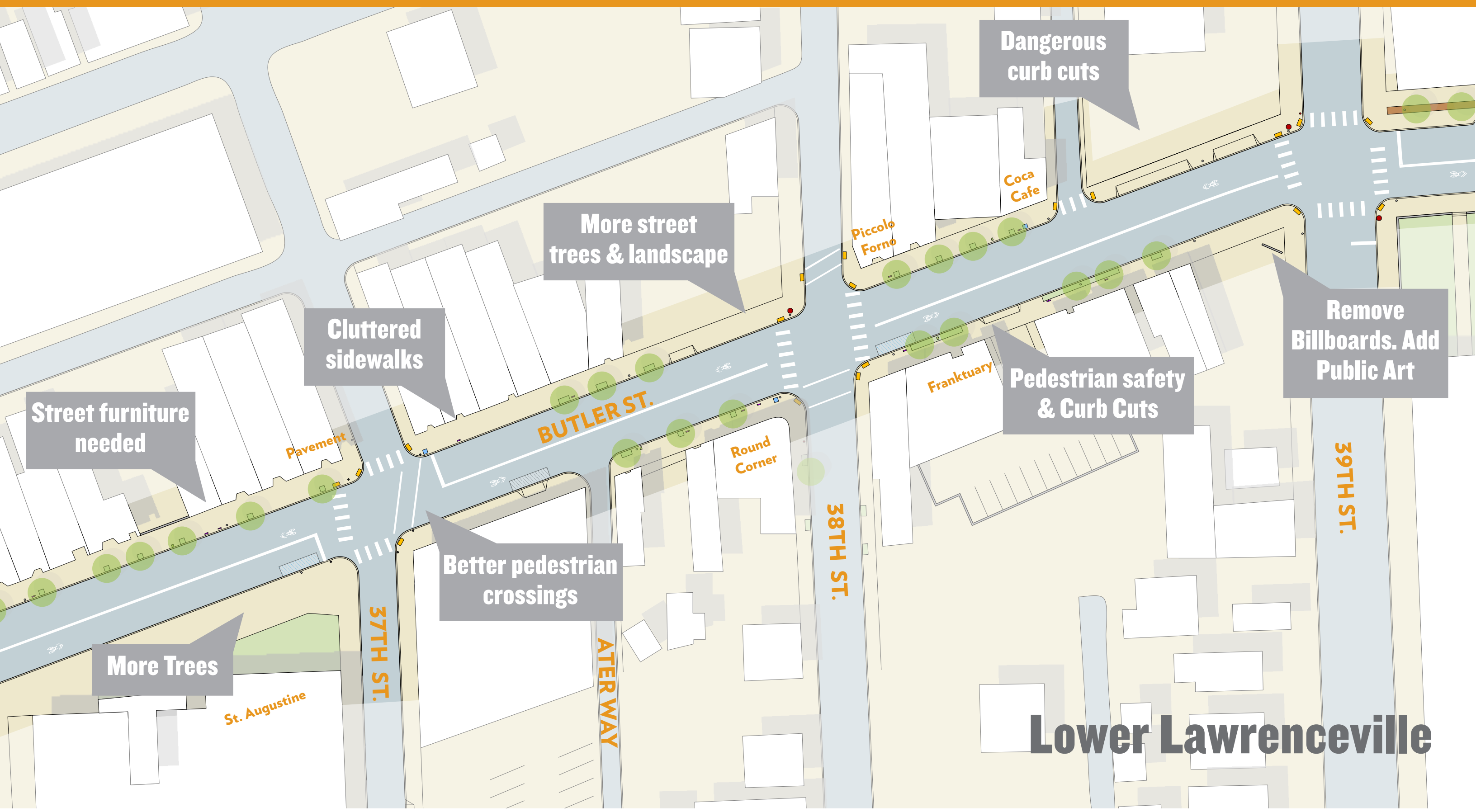
40TH ST.

Findings | Survey Responses

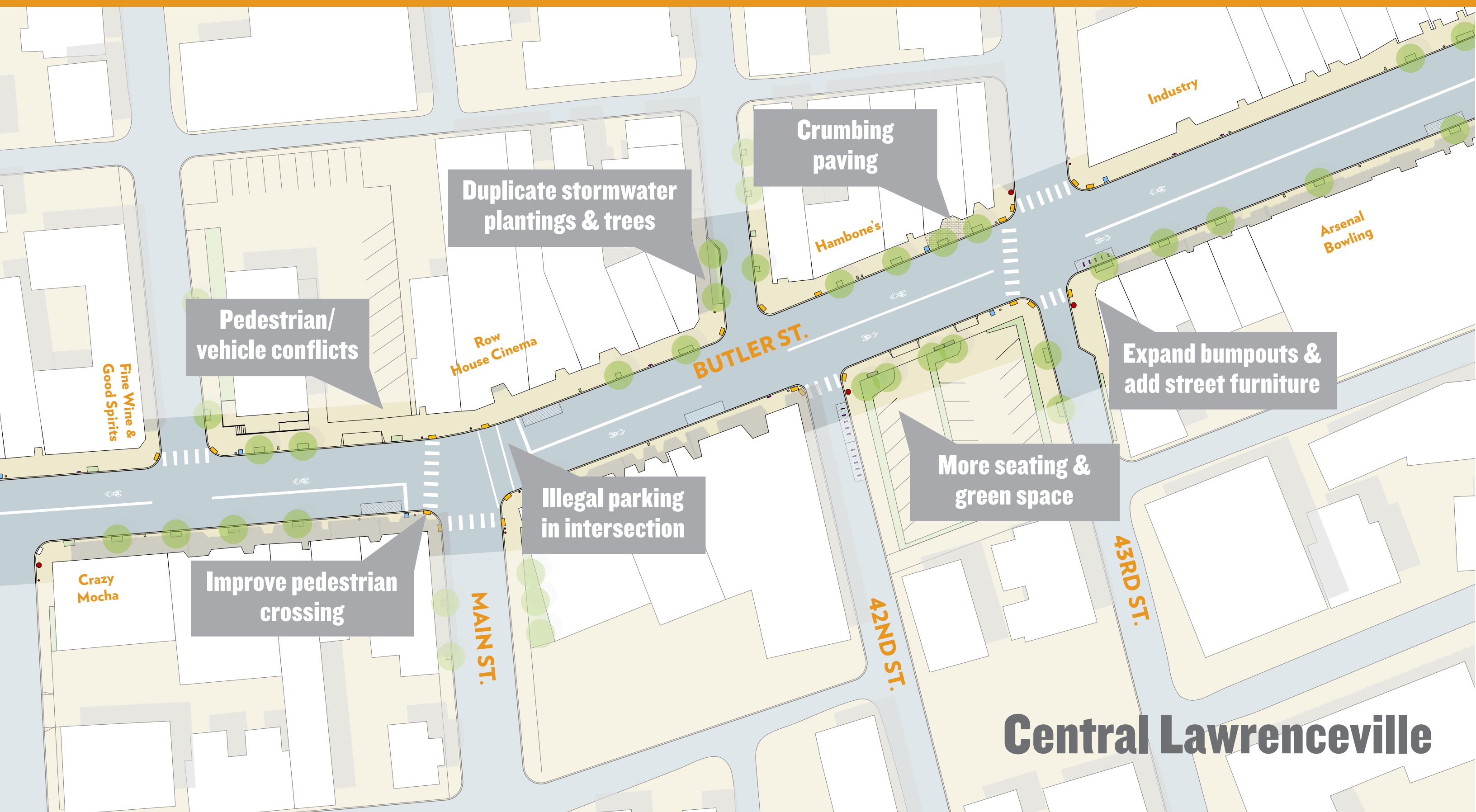
Typical Butler Section



Findings | Survey Responses



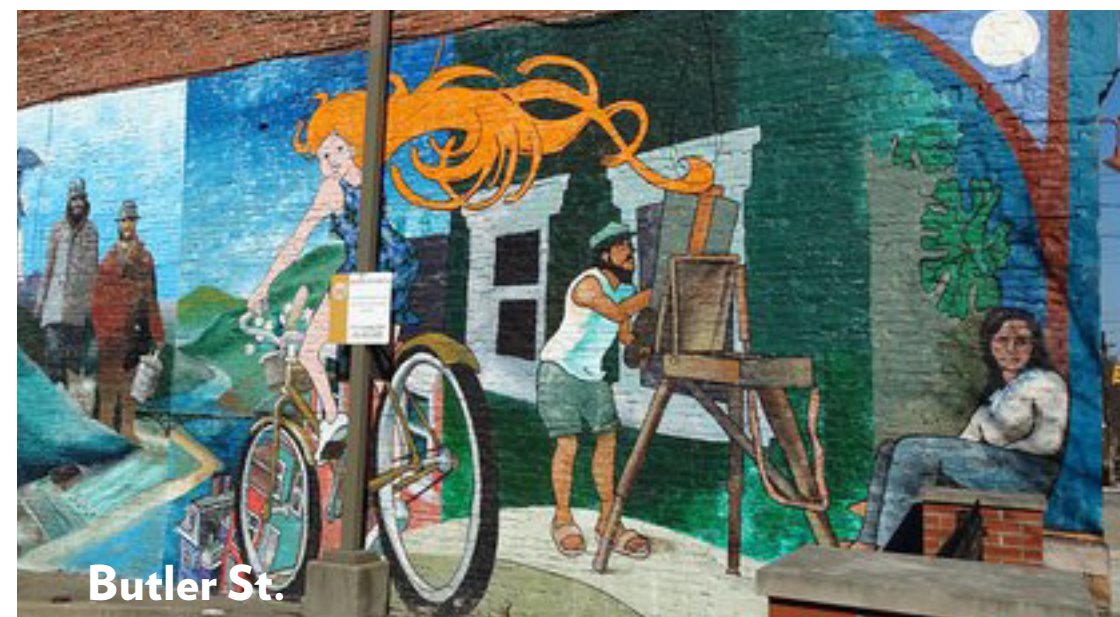
Findings | Survey Responses



Findings | Survey Responses

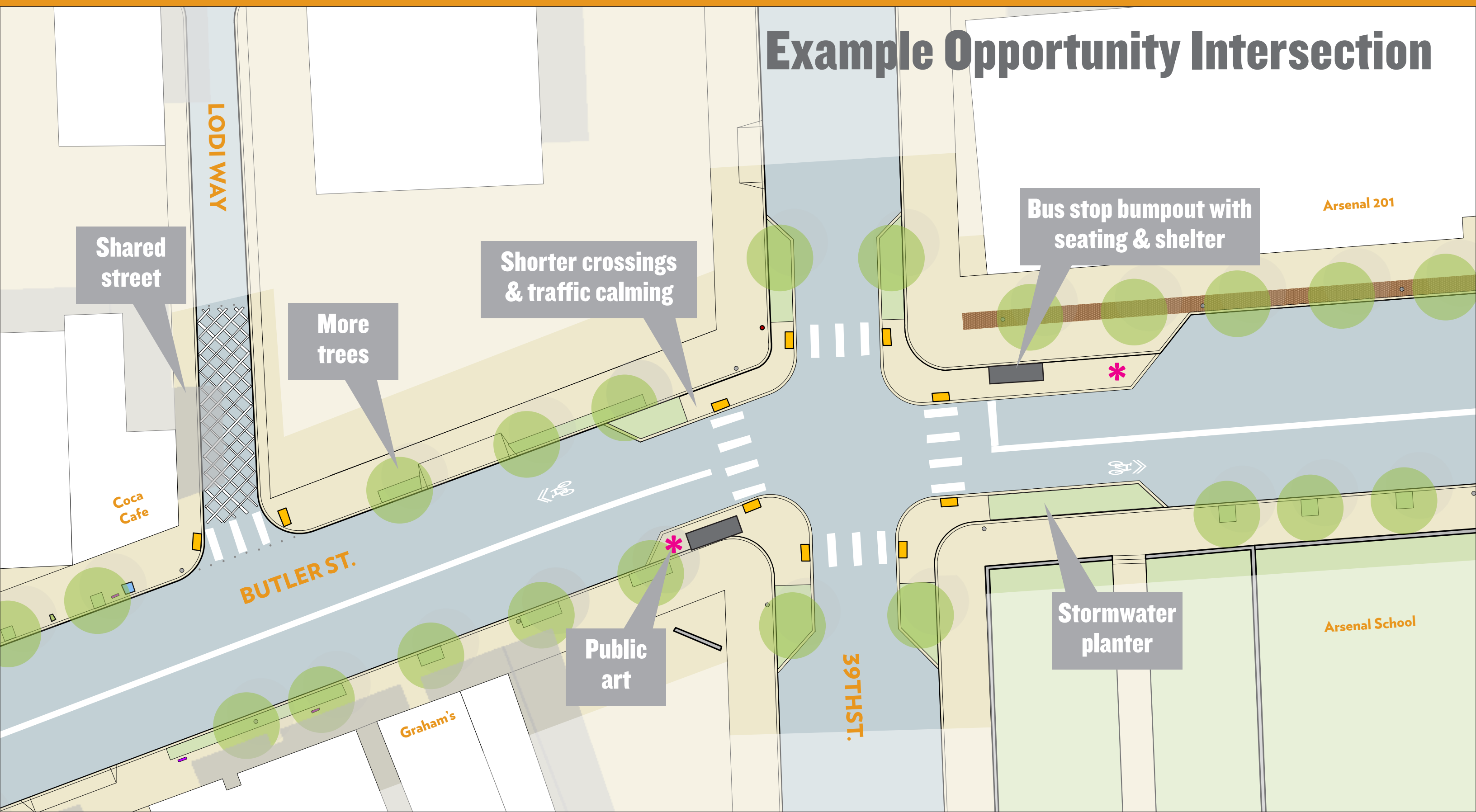


Pittsburgh Palette



Recent streetscape innovations in Pittsburgh

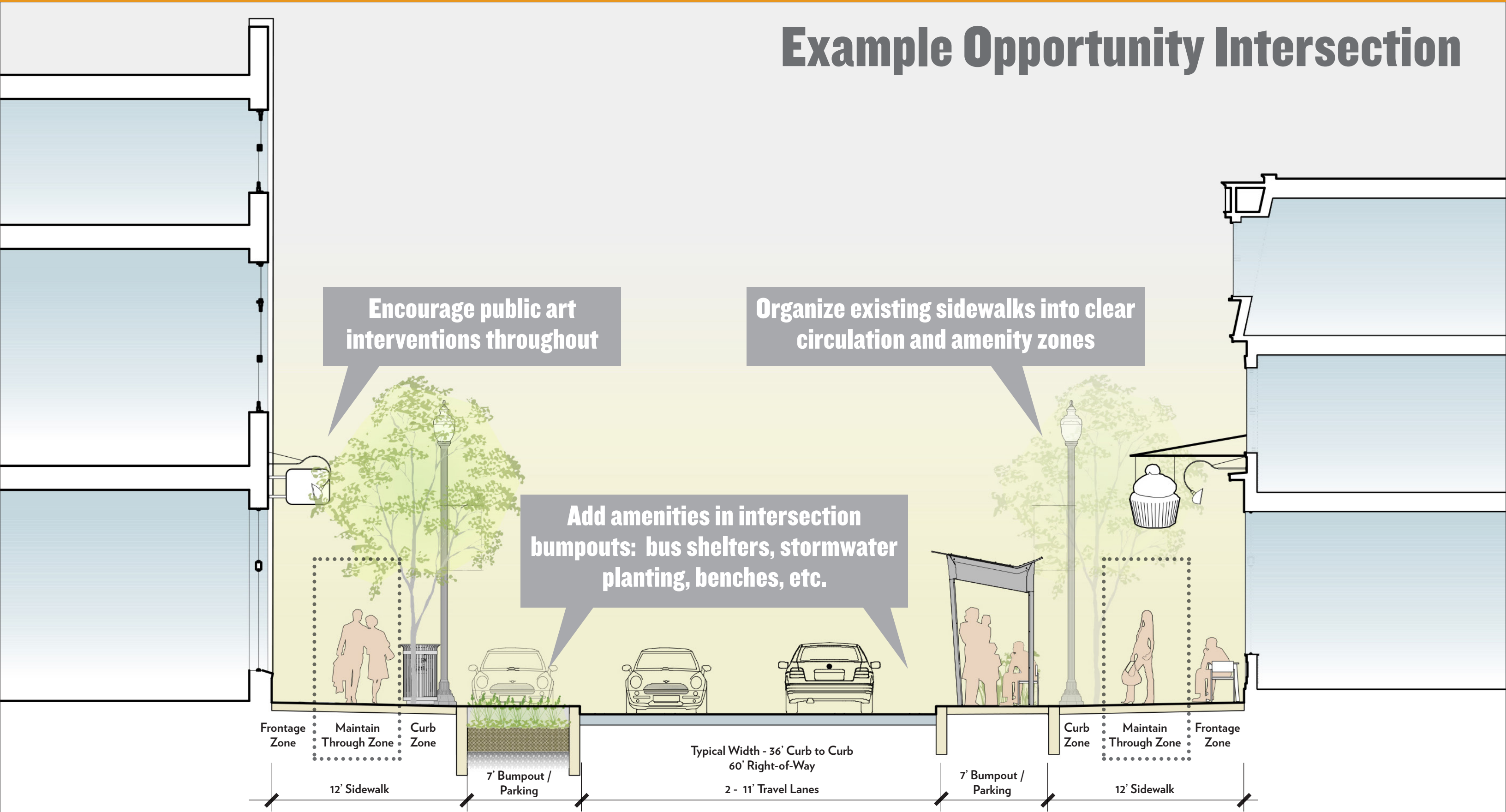
Possible Design Strategies



Example Opportunity Intersection

Possible Design Strategies

Example Opportunity Intersection



Next Steps

- **Create design recommendations for the entire Butler corridor.**
- **Discuss options with project team, city staff and community.**
- **Develop new online survey for additional feedback.**
- **Create document draft for review.**

Questions?

- **What else needs to be considered?**
- **If you would like more information or to provide comments about this project, please contact Rachel @ the Lawrenceville Corporation.**
- **Thank you for your time!**