

Lawrenceville Historic District National Register Nomination Project Update

District Significance

- National Register properties can be eligible under four Criteria for Evaluation

Criterion A: Event

Criterion B: Person

Criterion C: Design/Construction

Criterion D: Information Potential

District Significance

- The Lawrenceville Historic District is recommended eligible under Criterion A in the areas of commerce and industry and under Criterion C for its exemplary array of Victorian and post-Victorian architecture as adapted to the circumstances of a predominantly working-class community.
- Its proposed period of significance is 1814-1950.

Survey Progress

- Field work conducted between June and September 2017.
- 5,189 survey records completed.
- ~3,000 properties (60%) recommended as contributing.
- ~2,000 properties (40%) recommended as non-contributing.
- Properties can contribute if they were constructed within the district's period of significance (1814-1950) and retain sufficient historic integrity.
- Properties rated as medium or high integrity are considered district contributors.



Representative property rated as high integrity

5432 Dresden Way



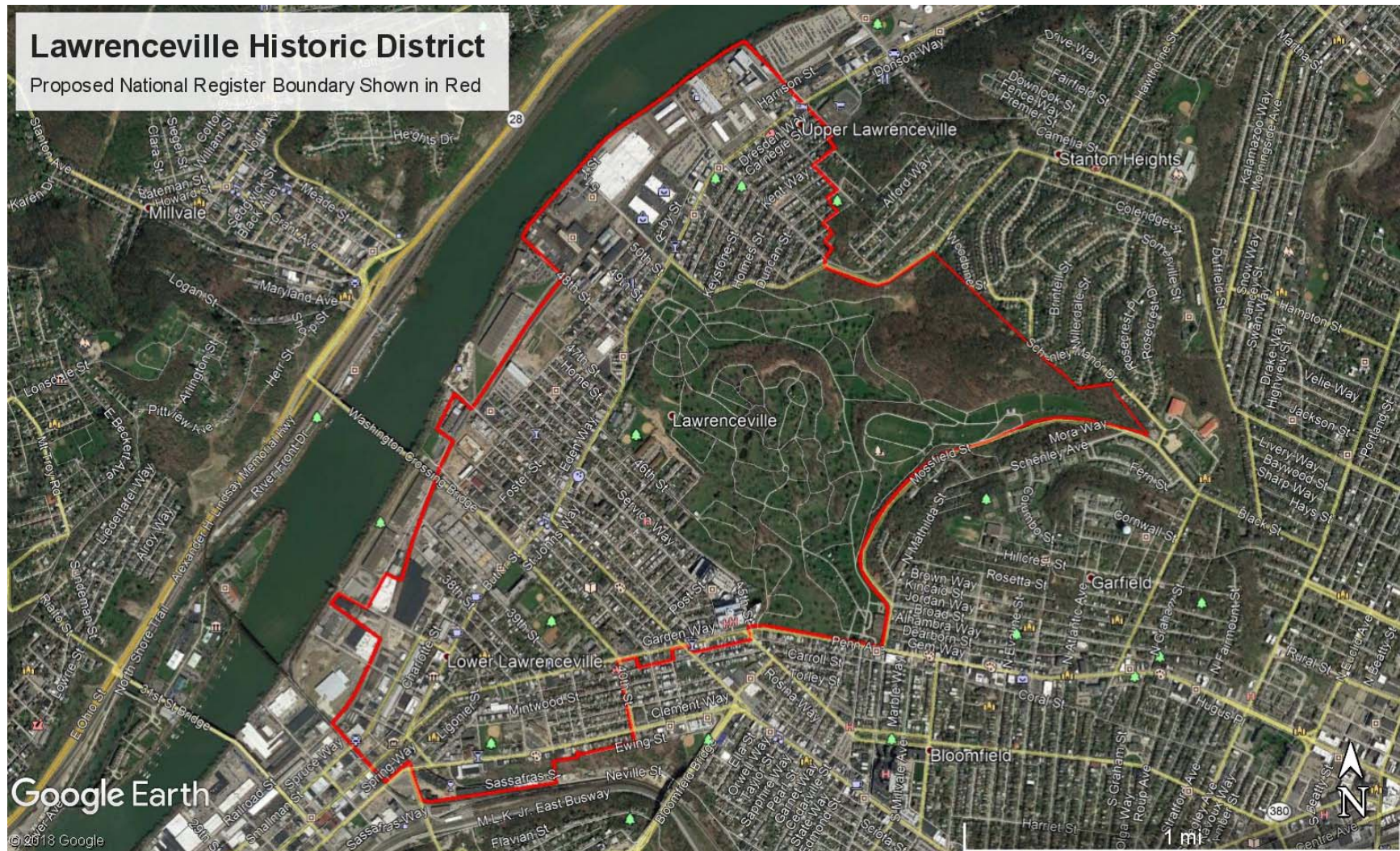
Representative property rated as medium integrity

5430 Carnegie Street



Representative property rated as low integrity

5430 Keystone Street



Next Steps

- A community meeting will be held late summer 2018, after the draft National Register nomination has been approved by the City and the Pennsylvania State Historic Preservation Office.
- The community meeting will provide additional information for property owners within the proposed district on the implications National Register listing.