

# HBONZ

# Community Meeting



August 3, 2011  
6:00pm – 7:00pm  
Boys and Girls Club



**Agenda:**

6:05 pm: Welcome (Lauren Byrne, LU; Matthew Galluzzo, LC)

6:10 pm: Introduction of HBONZ Owners and Partners  
Overview of Site Plan and Proposed Business Plan

6:30 pm: Facilitated Questions and Answer Session (Lauren Byrne, LU)

7:00 pm: Meeting Wrap-Up and Next Steps (Lauren Byrne, LU; Matthew Galluzzo, LC)

# HAMBONE'S

## RESTAURANT & PUB



See TripAdvisor Alerts  
HAMBONE'S RESTAURANT & PUB  
1125 W. 11th St. #100  
Wichita, KS 67202  
(316) 261-1125  
www.hambones.com

ATM  
INSIDE



ATM  
INSIDE



HAMBONE'S

Heineken

SAMUEL  
ADAMS

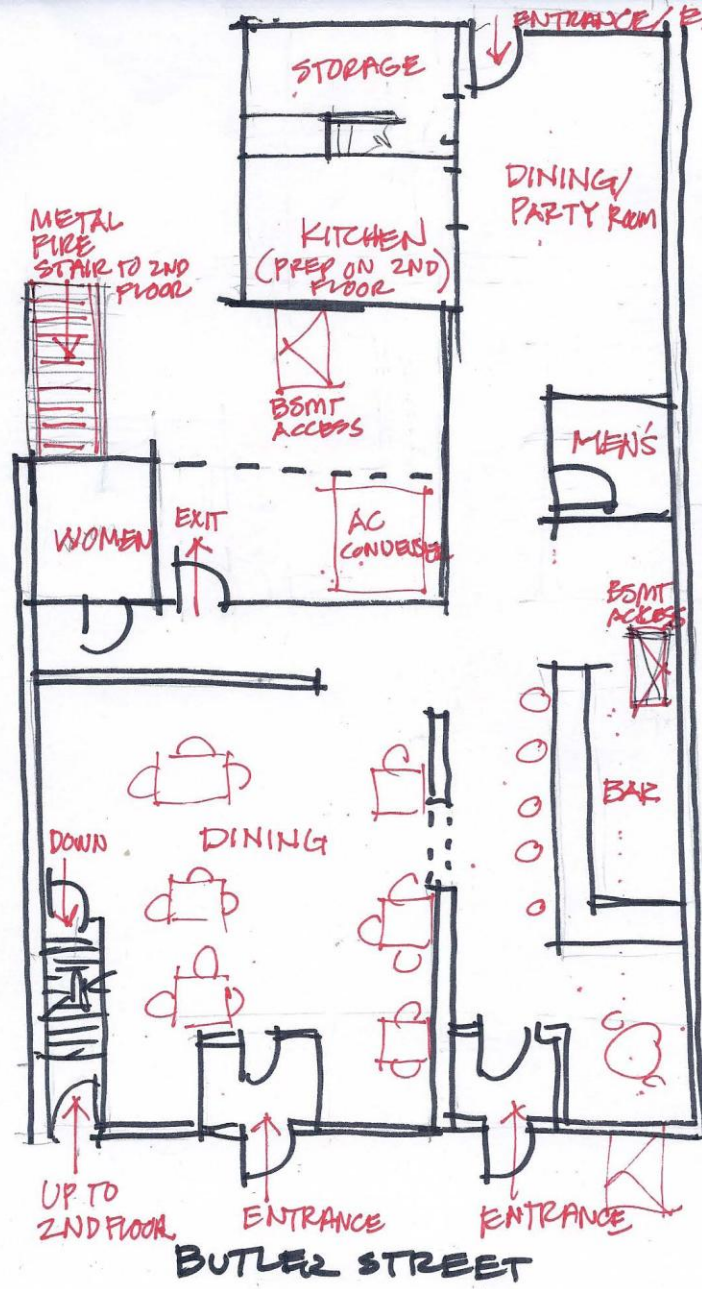
BUD LIGHT

HAMBONES

CASH  
REWARD

HAMBONE'S  
K RAUKE FRIDAY!  
SATURDAY  
BLOODY MARY  
SUNDAY BRUNCH

SAT & SUN  
BRUNCH  
11-2

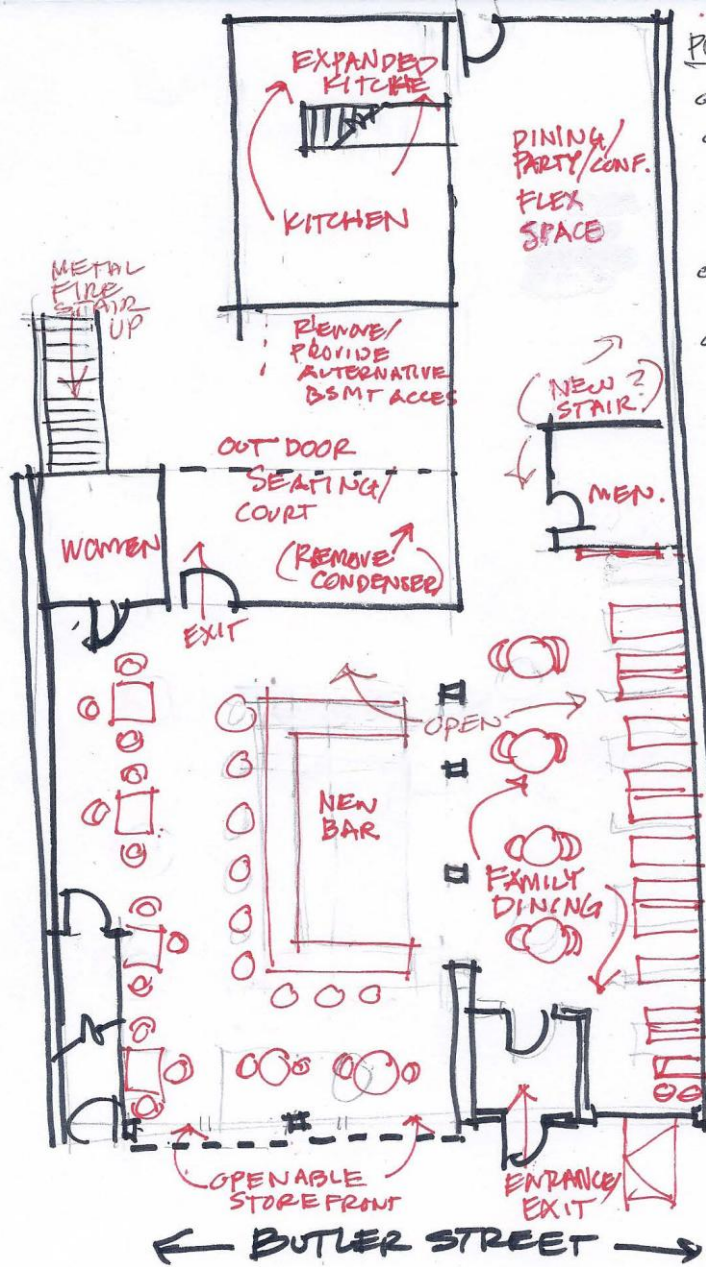


EXISTING FACILITY ISSUES

- IN EFFICIENT USE OF SPACE/TRAFFIC FLOW.
- UNDER UTILIZED COURT YARD.
- WASTED ENTRANCE SPACE
- KITCHEN TOO SMALL/CRAMPED
- BSMT 'TS (3) SEPARATE SECTIONS.
- INTER BASEMENT ACCESS IS DIFFICULT
- FOOD PREP IS ON 2ND FLOOR.
- MANY UPGRADES NEEDED I.E. FINISHED, TOILET FACILITIES, KITCHEN
- BACK ROOM/STORAGE UNDER UTILIZED

ROUGH SKETCH EXISTING "HAMBONES" FACILITY

- NOT TO SCALE - NOT COMPLETELY ACCURATE -  
 PAUL GRAF, ARCHITECT. 7.28.11



PROJECT OVERVIEW

- o OPEN INTERIOR SPACE
- o MAJOR INVESTMENT IN SOUND SYSTEM/ ACOUSTIC CONTROL BET. DINING & BAR & BAR TO EXTERIOR
- o PROVIDE NEW ACCESS TO BASEMENT? (MAY BE CODE REQ'T)
- o OPEN 3 SECTIONS OF SEPARATED BASEMENT AREAS TO PROVIDE ACCESS FOR NEW TAP SYSTEM ETC.
- o MAKE TOILET FACILITIES ACCESSIBLE & MEET CODE (20% OF RENOVATION COST CAN BE REQUIRED BY CODE TO MAKE FACILITY MORE ACCESSIBLE)
- o EXPAND KITCHEN
- o PROVIDE NEW MECHANICALS, I.E. EXHAUST, CONDENSER ECT. TO ROOF TOP
- o PLAN FOR FUTURE 2ND FLOOR BAR - (EXISTING APARTMENT SPACE)
- o PLAN FOR SINGLE APARTMENT ON 3RD FLOOR.
- o ACCOMMODATE HIGH END TV/ SOUND SYSTEM THROUGH.
- o NEW AC/MECH.
- o RENOVATE COURTYARD
- o RAISE CEILINGS.

ROUGH CONCEPT SKETCH "H BONES"

NOT TO SCALE. NOT COMPLETE & VERY PRELIMINARY -

# Any further questions?....

THANK YOU FOR COMING!

Contact Lawrenceville United with any future concerns....

[info@LUnited.org](mailto:info@LUnited.org)

412.802.7220