

LAWRENCEVILLE



UNITED

**Agenda for 6th Ward Block Watch
9/26/2016**

1. Introductions

2. Public Safety Update

A. Public safety report

3. 3700 Butler St - Presentation and Q&A

4. 3832 Penn Ave - Papa Joe's (Formerly New Gourmet) - Presentation and Q&A

6. Upcoming Events

Lawrenceville Food Pantry Location Change

LOCG Volunteer Days – Wednesdays 6-7 PM at McCandless & Natrona

Tree Park Workday – 2nd Mondays @ 5:30 PM at Stanton & Keystone

Duncan Workday – 4th Mondays @ 6 PM at 54th and Duncan

Lawrenceville Hospitality Association - October 2nd from 12 – 5pm

Tickets must be bought in advance (\$15) or day-of (\$18) from Gallery on 43rd, City Grows, Dandelions, Coca Cafe and Pavement until 4:30 P.M. on Saturday, October 2.

Sunnyside Elementary School Tour – 10/6 @ 9 AM

Next 6th Ward Block Watch – TBD (Next date is Halloween)

LU's Kids' Halloween Party – 10/29, 12pm at Arsenal Park

7. Other comments, questions, concerns?

Ground Rules

Ground Rules: The community has worked to establish ground rules for the facilitated meeting. Anyone refusing to follow these ground rules will be asked to leave the meeting in order to ensure that the discussion stays respectful, productive, and constructive.

- Please hold all questions for the end of the presentation. We will go back to a slide if there is a specific question or comment, so please jot own notes that you may want to revisit when we open it for Q&A.
- Once opened for questions and comments, please raise your hand until you are acknowledged by the meeting facilitator. Please identify yourself by name, and also your relationship to or interest in the issue once acknowledged by the facilitator.
- Please be respectful of all speakers, including those asking questions and making comments.
- Questions/ comments will be limited to 2 minutes each. A clarification question or comment will be permitted.
- If time permits, we will call on individuals who would like to ask or make a second or additional question or comment.
- Please also use index cards / paper available if you'd like to submit a comment or question but are not able to in the meeting. We will compile as part of the follow-up notes from the meeting.
- Please make sure that you sign in to the meeting if you would like to receive a copy of the notes from the meeting and information on future development meetings.
- If the ground rules are violated or ignored, we will ask the individual to leave the meeting, and if it continues, we will end the meeting.

THANK YOU!

Safety and Laws

When you're commuting on your bike, you're likely to share the road with cars. If you know the laws, safety rules and have the right attitude, you can be a confident, streetwise cyclist.

Bicycling Safety

Every bicyclist is responsible for his or her personal safety and welfare while remaining alert and mindful of the conditions of the roads or trails.

- **Always wear a helmet:** Pennsylvania law requires all cyclists under age 12 to wear an approved bicycle helmet.
- **Obey traffic laws:** Under Pennsylvania law you are considered a vehicle when you ride a bike. Ride on the right side of the road. Obey stop signs and red lights and never ride against the flow of traffic.
- **Be predictable:** Ride in a straight line, with at least one hand on the handlebars. Check to be sure your path is clear and change directions without swerving. Use hand signals to indicate when you are turning.
- **Make yourself visible:** Wear bright cycling clothes. Put reflectors on your wheels and on the front and rear of your bike. At night use a headlight and an active red light and reflector on the rear of your bike.
- **Maintain your bike:** Carry a pump, a patch kit and a spare tube.
- **Take care of yourself:** Carry plenty of drinking water and snacks for energy. Bring your cell phone (or change to make a call) in case of an emergency.

Pennsylvania Bicycling Laws

In Pennsylvania, a bicycle is considered a vehicle, and you must obey all of the laws that apply to other vehicles. There is also a set of rules that apply specifically to bicycles. If you ride in violation of the traffic laws, you greatly increase your risk of a crash, and will likely be found at fault in the event of an accident.

General

- You cannot have more people on the bike than the bike is designed to carry but an adult can transport a child in a secure child carrier or trailer.
- You can ride a bicycle either on the shoulder or the roadway itself, depending on traffic speed, condition of the road and other safety factors.
- Like all road users, slower vehicles should keep to the right. Bicyclists may ride in the left lane of a one-way street that has multiple lanes. However, this does not apply to freeways.
- You cannot carry any packages or other items that prevent you from keeping at least one hand on the handlebars.

Equipment

- If you use your bike between sunset and sunrise, it must be equipped with a front lamp, rear and side reflectors that are visible from at least 500 feet. This is both to help other motorists see you and also to illuminate your path.

- Your bike must be equipped with brakes that will stop the bike 15 feet from an initial speed of 15 mph on dry, level pavement.

Sidewalks

- Pedestrians have the right-of-way on sidewalks and bicycle paths. You must give an audible signal as you approach and pass a pedestrian.
- You are not permitted to ride a bicycle on a sidewalk in a business district (except where permitted by official traffic control devices), or where there is a bicycle-only lane available.

Parking

- You can park your bicycle on a sidewalk as long as it does not impede pedestrian traffic.
- You can park your bicycle at the curb or edge of the roadway where parking is allowed as long as it does not obstruct other vehicles.

Helmets

- Anyone under the age of 12 must wear a helmet when riding a bicycle. This applies to anyone operating the bicycle, riding as a passenger or riding in an attached restraining seat or trailer. The Pennsylvania Department of Transportation strongly recommends that all bicyclists wear helmets whenever they ride.

Freeways

- Bicycles are not permitted on freeways in Pennsylvania without permission of the Pennsylvania Department of Transportation.

Traffic Signals

- All traffic signals must be obeyed in accordance with standard vehicle laws. If a traffic signal does not detect your bicycle, try positioning the bicycle directly over the saw cuts in the pavement that detect vehicles. If the signal still does not detect you, you may treat the red signal as a stop sign and proceed through the intersection after yielding to all intersecting traffic (including pedestrians).

Hand and Arm Signals

- To signal a left turn, extend the left hand and arm horizontally.
- To signal a right turn, extend the right hand and arm horizontally, or extend your left hand and arm upward.
- To signal a stop or decrease in speed, extend the left hand and arm downward.

CHIEF MCLAY'S TOWN HALL MEETING



Join the Pittsburgh Police and Chief McLay for a Town Hall Meeting!

Meet your Public Safety Zone Council Leadership

Share Public Safety Concerns • Review Crime Statistics • Provide Feedback on
Community-Police Relations • Tell Us How the Police Can Better Serve Our Community

**Zone 1: Thursday, October 6, 5:30-7:30 p.m., Manchester
Citizen Corporation, Manchester**

**Zone 2: Wednesday, September 28, 6-8 p.m.,
Lawrenceville Branch of the Carnegie Library, 279 Fisk
Street**

**Zone 4: Thursday, September 15, 6-9 p.m., Pittsburgh
Firefighters Union Hall, 120 Flowers Avenue, Hazelwood**

Thank you Zones 3, 5 and 6 for
great Town Hall meetings!



Heroin

- # 1 most abused drug in Pittsburgh / Allegheny County
- Over 200 overdose deaths in Allegheny County so far this year
- Heroin users often begin by snorting the drug then move on to injecting to achieve a quicker high.
- The body builds up a tolerance to heroin. Over time, it takes more and more heroin to achieve a high.
- Heroin usually sells for \$10.00/dose. Some long-time users spend upwards of \$200.00/day on heroin.

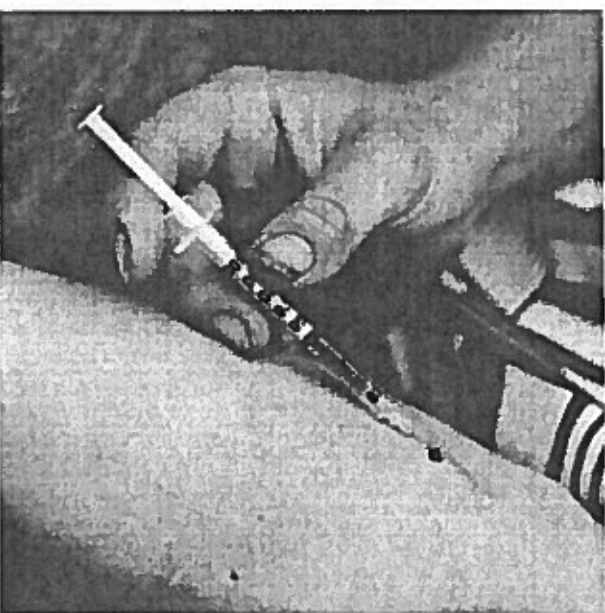
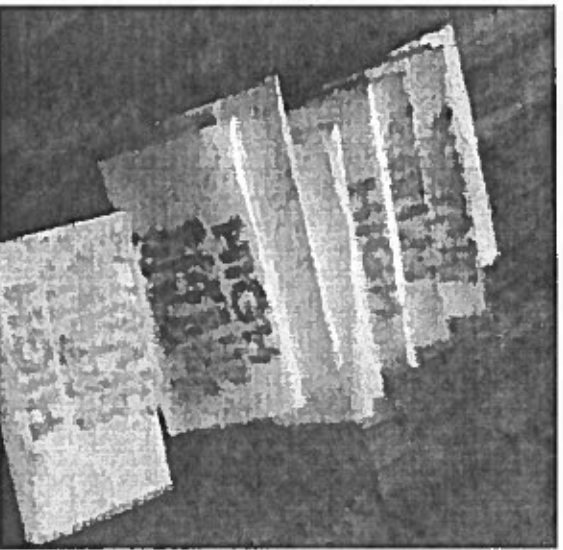


Heroin

- Many heroin users result to committing burglaries and thefts to obtain enough money to get their daily “fix.”
- Short – Term Effects of Heroin use:
 - Slowed breathing
 - Clouded mental functioning
 - Nausea and vomiting
 - Sedation; drowsiness
 - Hypothermia (body temperature lower than normal)
 - Coma or death (due to overdose)

Heroin

- LONG-TERM EFFECTS OF HEROIN USE INCLUDE:
 - Bad teeth
 - Inflammation of the gums
 - Constipation
 - Cold sweats
 - Itching
 - Weakening of the immune system
 - Coma
 - Respiratory (breathing) illnesses
 - Muscular weakness, partial paralysis
 - Reduced sexual capacity and long-term impotence in men
 - Menstrual disturbance in women
 - Inability to achieve orgasm (women and men)
 - Loss of memory and intellectual performance
 - Introversion
 - Depression
 - Pustules on the face
 - Loss of appetite
 - Insomnia





Business/Address Information Sheet

People

Property Owners: Joe and Deb Talarico
Prospective Business Owners: Papa Joe's Wine Cellar
Owners: Katie, Beth, Deb, and Joe Talarico
License Manager: Katie Talarico

Initial Timeframe: January 1, 2017

Place 3832 Penn Ave.

Size: Currently 1130 square feet (including proposed bathroom addition), proposing additional 880 square feet on second floor.

Zoning: Local Neighborhood Commercial

Site Plan: attached

Necessary Approvals

Building Permit: pending

Occupancy Permit: pending after improvements

Liquor License: PA limited winery license, preliminary approval obtained for satellite location; currently licensed in Butler County

Business Overview

Reps from LU and LC met with Joe Talarico to request specific information pertaining to the proposed business and its operation. The following information has been provided in response to this request:

Ownership Principles / Vision: Traditional Italian restaurant and limited winery
Target Audience / Customer Demographic: Primary demographic will be residents of Lawrenceville and surrounding neighborhoods, ages 21-70. Families will be welcome
Days / Hours of Operation: Tue-Thu 11AM-8PM, Fri-Sat 11 AM-11PM
Hours Selling Alcohol: hours of operation as above
Alcohol Menu / Price points: red and white wines, \$16-25 per bottle, \$6-8 per glass for on site consumption
Food Menu / Price points: salads, soups, appetizers \$5-11, pasta \$10-15, entrees \$15-22, desserts \$4-8
Number of Employees: initially 4 F.T.E., anticipate 6-8 F.T.E within one year
Entertainment: none planned initially
Site Plan / Façade/ Interior Improvements: stone/stucco/glass façade, addition incl. women's and men's rest rooms and mop closet
Parking: none
Number of Dining Tables / Number of Seats at Bar: seating for 18 at dining tables, stand up wine bar (seats at bar in drawings in error). Outdoor seating for 20-25 in rear of building, proposing additional seating for 25-30 on second floor.

Security / Video Cameras: in all dining areas

Signage: flush sign with lighting above on façade above windows.

Smoking Policy: no smoking

Private Events: planning private events in proposed second floor dining room

Kid Friendly?: yes

Recycling: all glass, plastic, aluminum, cardboard, and paper

Noise/ Volume Levels: minimal we plan a restaurant with soft background music, largely ethnic in concert with Italian theme

Owner and Partner Information:

Katie Talarico, Secretary/Treasurer of Papa Joe's Wine Cellar and site manager for satellite location of winery. Graduated from University of Pittsburgh in 2015 with BA in English and Italian. Has worked for Enrico Biscotti in strip district and Enrico's café for 3 years. Experience in retail, serving, wine making, and as a barrista. Also served as co-manager at the Artsmith's Kool Kat Café in Mount Lebanon for approximately 1 year.

Beth Talarico, President of Papa Joe's Wine Cellar and chef. Graduated from the University of Pittsburgh in 2015 with BA in Communications. Has worked for Enrico Biscotti and Enrico's café for 3 years. Experience in retail, serving, wine making, and food preparation.

Joe Talarico, Director and wine maker. Currently works as an anesthesiologist at UPMC Presbyterian. In addition to medical degree, attended Gannon University in Business Administration, has managed 2 medical practices, and has 35 years of wine making experience.

Deb Talarico, co-owner and special event planner is a retired emergency room nurse.

Why Lawrenceville? We see Lawrenceville as an up and coming area of Pittsburgh in the dining and entertainment industry. We believe our business is similar to many other businesses in the neighborhood, but different enough to complement existing businesses. Our target customers being primarily diners will be minimally if at all intrusive to current residents, and other like businesses in the area will not likely result in potential customers who will enter our business in an intoxicated or unruly state. We believe that the neighborhood is an ideal location for our business, and our business will be a potential asset to the neighborhood.