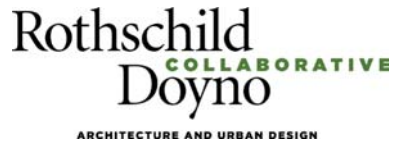


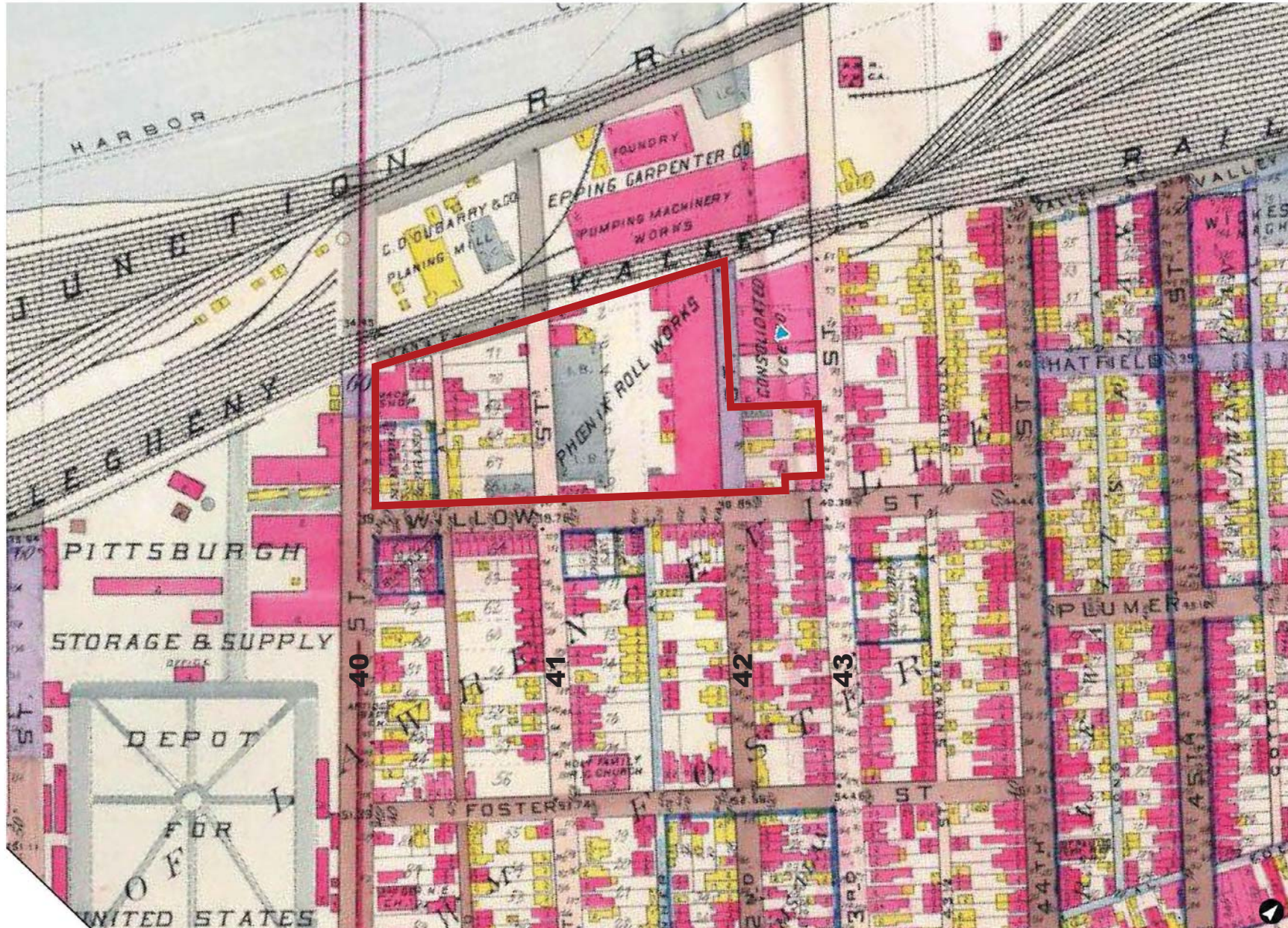
COMMUNITY MEETING  
**FORT WILLOW**  
APRIL 27, 2015



# THE FORT WILLOW EXPERIENCE



# THE FORT WILLOW EXPERIENCE



PITTSBURGH AND ENVIRONS. 79

main factory contains three floors and a basement, fully equipped with the latest improved machinery, while there is a large iron foundry with two cupolas, and a brass foundry. Employment is given to 350 skilled hands. The leading specialties for which this firm is noted are iron and brass door locks, knobs of all kinds, pinions and counter shafts. These goods are made in all grades to suit the market, and every effort is made on the part of the management to preserve undiminished the unimpaired name and exalted reputation of the house. Their locks and other specialties are directly suitable to the best class of hardware dealers all over the United States, but the firm's principal trade is with the wholesale jobbers of the country, who buy in large quantities. Goods bearing the name of this firm are the standard of excellence everywhere. A copy of latest catalogue represents the interests of the house upon the road, and a catalogue of 217 pages is mailed to the trade on application. The individual members of the firm are Arthur Britton, Oswald S. Graham and Philip Mathes. Mr. Britton has been connected with the business for twenty-five years, and is now manager of the Northwestern department, with headquarters at No. 154 Lake Street, Chicago. Mr. Graham has been in the business some twenty years, and has the direction of affairs at the Pittsburgh office; while Mr. Mathes has charge of the works, and has been in the house for the past twelve years. These gentlemen bring to bear special qualifications for the business, and Pittsburgh's supremacy is consequently dependent upon the existence of just such houses as theirs.

**THE ONLY WORKS IN THE UNITED STATES MAKING ROLLS AND PINIONS EXCLUSIVELY.**

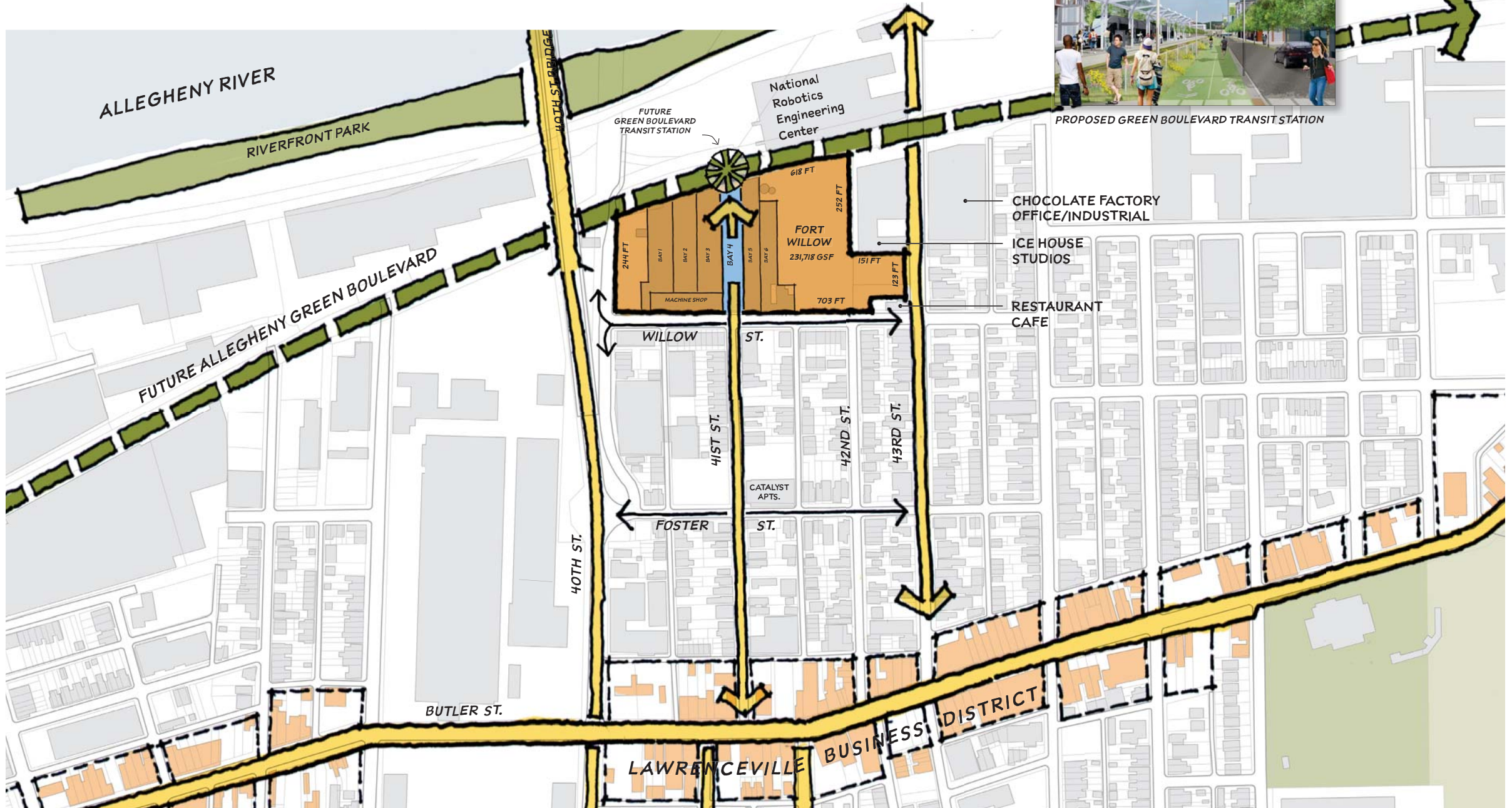
## ROLLS

## PINIONS

FOR ALL PURPOSES.

throughout is of the most complete and perfect character, including a new electrical hoisting crane of 40 tons capacity; several winding and traveling cranes; twenty-seven roll-running lathes, and simple steam power, and connections are made by switch with the entire railway system of the city. A force of 115 skilled workmen is constantly employed, and the output is one of great magnitude and value. The attention of rolling mill owners and iron and steel manufacturers generally is directed to the superior quality and uniform reliability of end iron and steel manufactured by this house. The firm are prepared to furnish their products in quantities to suit the shortest possible notice, under the strictest guarantee and at very moderate prices. They are in heavy and influential demand in all parts of the United States and Canada, and never fail to meet the needs and requirements of patrons under all circumstances. The members of the firm are Messrs. J. S. Bennett, Holt, Small and George F. Blunk. Mr. Bennett came in as partner some twenty years ago, and is a director of the Pennsylvania National Bank. Mr. Small has been in the house since 1867, and all are gentlemen of the highest repute in industrial and commercial circles.

# FORT WILLOW NEIGHBORS



Base GIS data courtesy City of Pittsburgh

Green Boulevard rendering courtesy Green Boulevard Strategic Plan

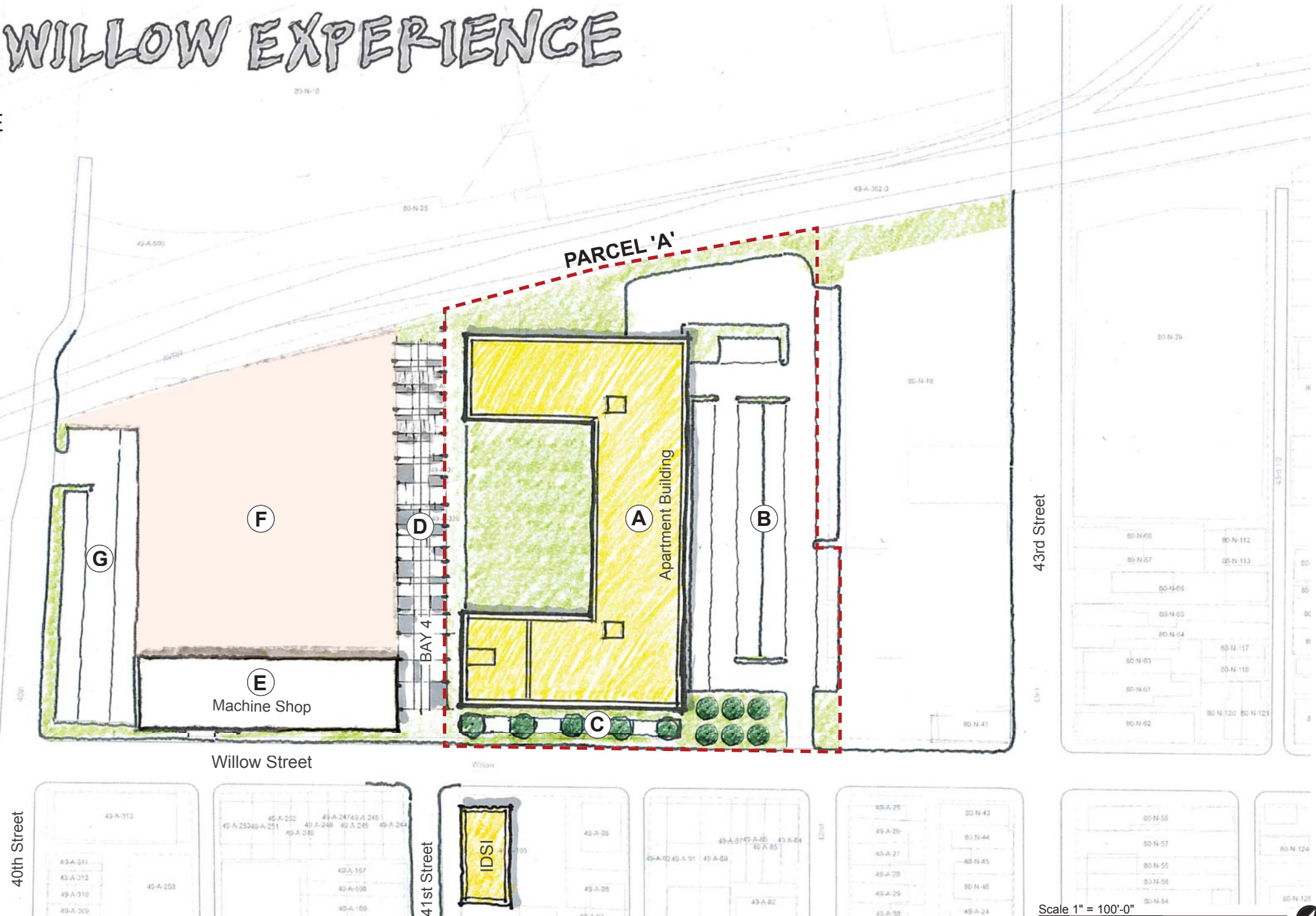
Scale 1" = 300'-0" at 11"x17"



# THE FORT WILLOW EXPERIENCE

## DEVELOPMENT TABLE

- A** APARTMENT BUILDING  
NEW CONSTRUCTION  
191 units
- B** EAST PARKING LOT - NEW
- C** WILLOW ST. PARKLET  
NEW PUBLIC OPEN SPACE
- D** BAY 4 ARCADE  
NEW PUBLIC OPEN SPACE
- E** MACHINE SHOP  
FUTURE USE  
8,800 sf
- F** FUTURE PHASE
- G** WEST PARKING LOT  
EXISTING



Base GIS data courtesy City of Pittsburgh

# THE FORT WILLOW EXPERIENCE

## DEVELOPMENT TABLE

- A APARTMENT BUILDING  
NEW CONSTRUCTION  
191 units
- B EAST PARKING LOT - NEW
- C WILLOW ST. PARKLET  
NEW PUBLIC OPEN SPACE**
- D BAY 4 ARCADE  
NEW PUBLIC OPEN SPACE**
- E MACHINE SHOP  
FUTURE USE  
8,800 sf
- F FUTURE PHASE



Base GIS data courtesy City of Pittsburgh



# BAY 4 REBIRTH

ALLOWING NATURE TO RECLAIM THE INDUSTRIAL RUIN AT BAY 4  
A NATURAL OASIS LEADING TO THE RIVER



BAY 4 TODAY, REMNANTS OF PHOENIX ROLLWORKS

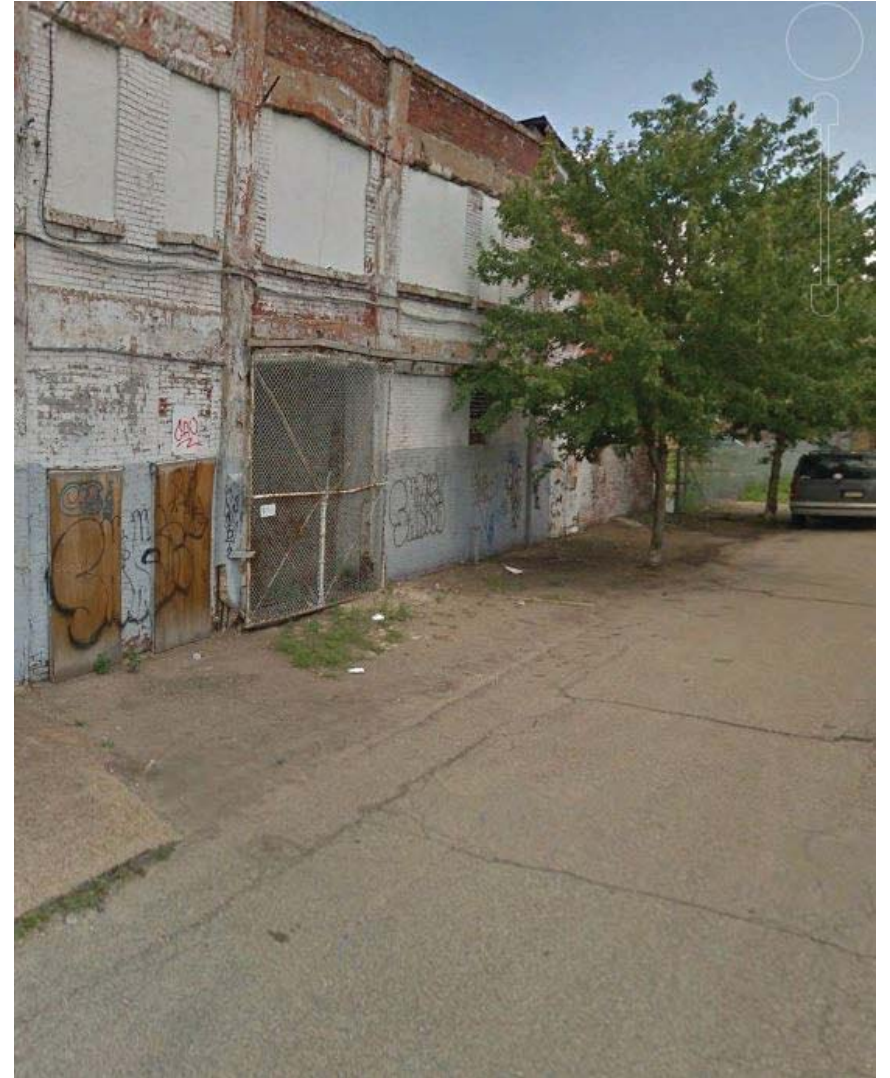


BAY 4 UNCOVERED, LETTING IN THE ELEMENTS



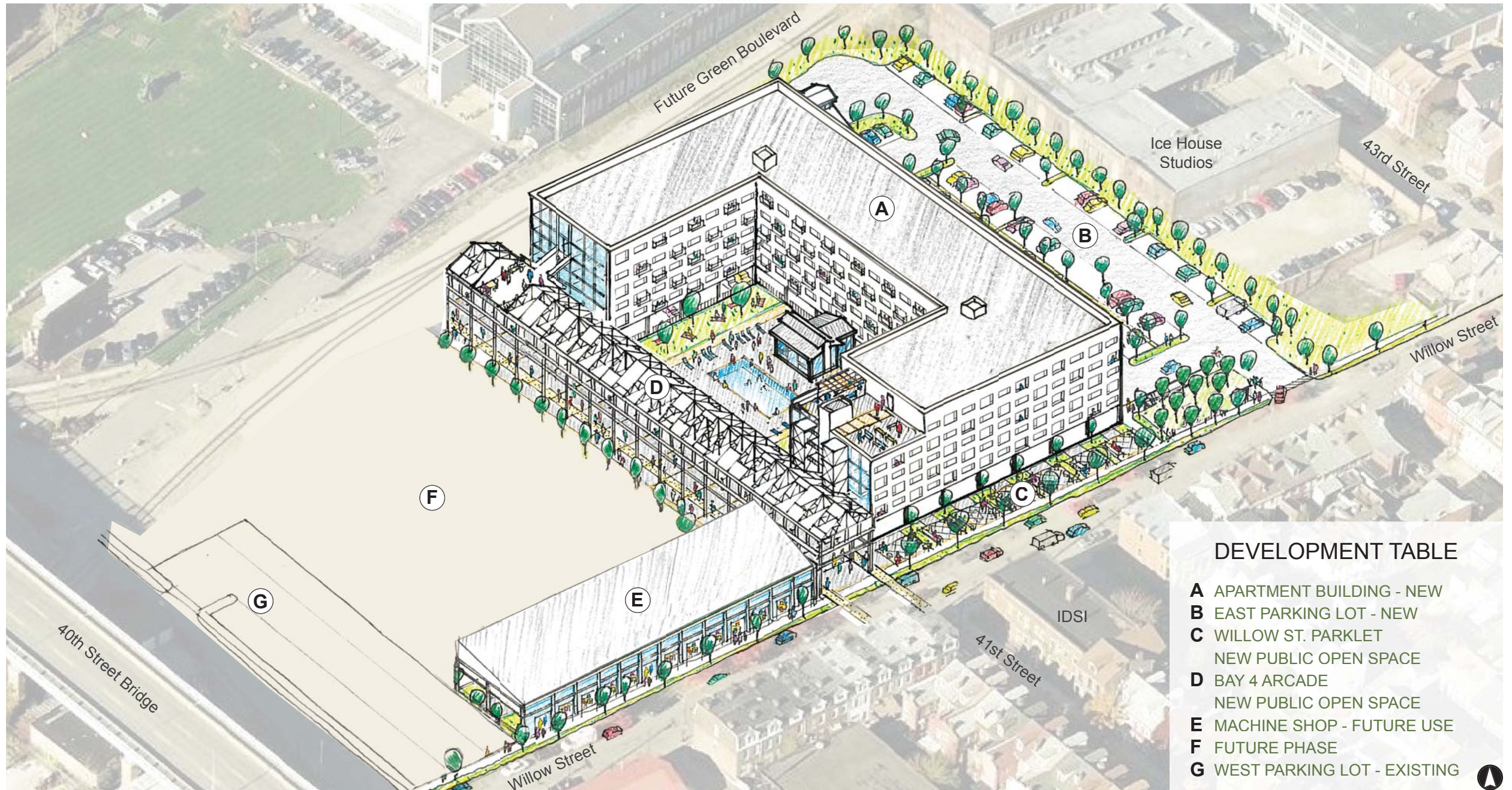
BAY 4 REBORN, AS NATURAL CORRIDOR CONNECTING THE NEIGHBORHOOD TO THE RIVER

# WILLOW ST. CONTEXT





# THE FORT WILLOW EXPERIENCE

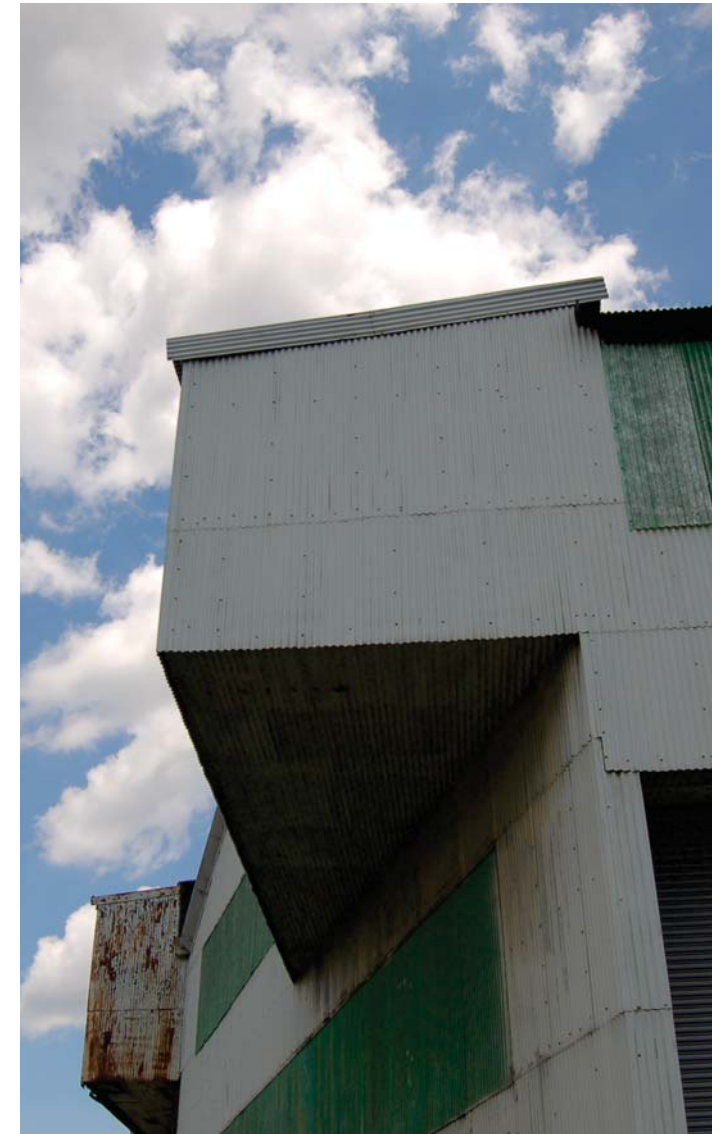


## DEVELOPMENT TABLE

- A** APARTMENT BUILDING - NEW
- B** EAST PARKING LOT - NEW
- C** WILLOW ST. PARKLET  
NEW PUBLIC OPEN SPACE
- D** BAY 4 ARCADE  
NEW PUBLIC OPEN SPACE
- E** MACHINE SHOP - FUTURE USE
- F** FUTURE PHASE
- G** WEST PARKING LOT - EXISTING

# FORT WILLOW @ Lawrenceville

ooo How does a building rise from the ashes of Pittsburgh's gritty, industrial past?



# RETURN OF THE BAYS

How the memory of the industrial heritage of the site becomes a powerful contemporary force ...



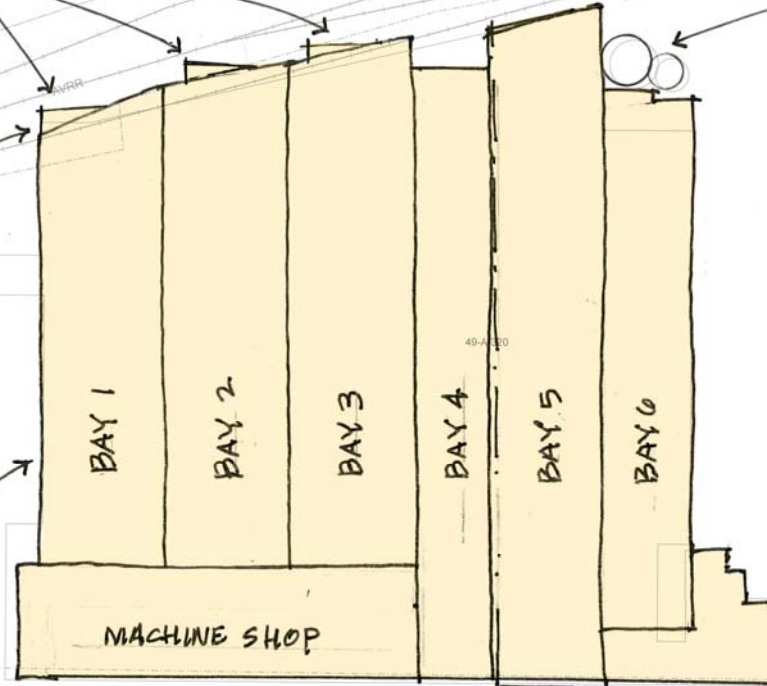
■ cantilevered, angular bay projections on the rear of Bays 1, 2, and 3 are powerful geometric forms that push through the 'box' of the enclosure.



■ the corner of Bay 1 was the largest cantilever of all the projecting bays, very sculptural



■ strong round geometry of the concrete silos and intricate steelwork projection above add monumentality.



■ the long, linear facade of Bay 1 makes no excuses for its industrial power and length



■ multi-colored siding: silver, rust, and green form a collaged pattern like an abstract painting



■ the silhouette of Bay 5 is the iconic outline of industrial Pittsburgh with its top clef story



